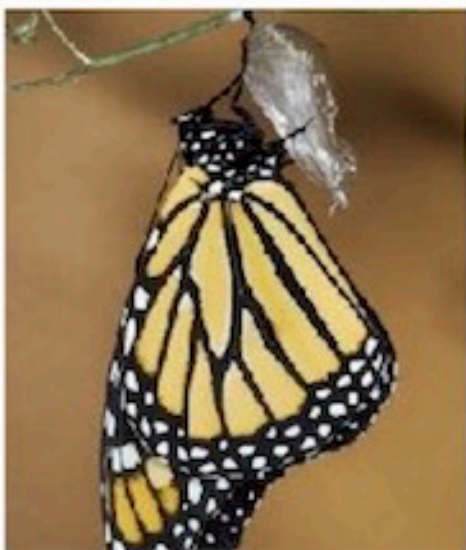


***How does the Monarch butterfly  
fit into our "wildlife corridors"  
and what can we do to help?***



**West Petaluma Hills**

open space forever

sponsoring *Talks on Nature Lecture Series*

Hosted: Aquas Cafe, 189 H St, Tuesday, March 20, 6:45PM

**Suzanne Clarke**- is a Sonoma County Master Gardener who creates wildlife habitat gardens. She moved to Petaluma in 2012. Previously she was a Master Gardener in Talbot County, Maryland, specializing in creating wildlife habitat, Integrated Pest and Storm-water management solutions.